



**Issue 88/Wednesday 30 June 2021**

This is the latest round-up of information for GP practices, produced by South East London CCG. Should you have any questions or need advice, contact your local borough primary care team in the first instance; they will escalate anything they can't resolve to south east London's Coronavirus co-ordination centre.

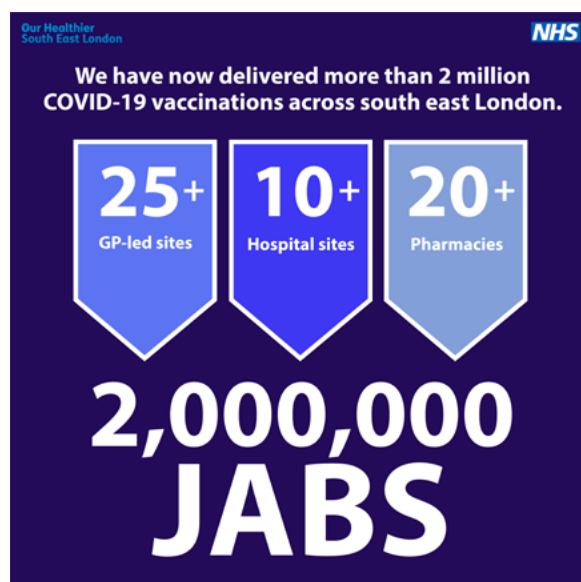
Please check for any borough-specific information, which will be attached to this bulletin by your borough primary care commissioning team.

## COVID-19

### Two million COVID-19 vaccinations given in south east London

Health and care partners from across south east London have been working together to roll out the vaccination programme. This week, we reached the milestone of two million COVID-19 vaccinations. This celebration provides an opportunity to reflect on the great work done by the vaccination teams to date.

One OHSEL initiative, among others, to support uptake includes the [Vaccine Facts information resource](#) which answers common questions SEL residents have about the vaccine. Read more [here](#).



## Leaflet to use with people worried about their second dose of AstraZeneca vaccine

This [leaflet](#) is for health practitioners to give to people who are now ready to have their second dose of COVID-19 vaccine and received AstraZeneca (AZ) vaccine.

---

## COVID-19 walk-in vaccination sites in south east London

We are doing all we can to make it easy for all adults to get their COVID-19 vaccines at a location convenient to them. There are clinics in operation at pharmacies, pop up tents, hospitals, health centres, sports stadiums, parks, buses, places of worship, housing estates and community centres across south east London. Further information on these clinics can be found on the [SEL website](#).

You can use this [A4 poster](#) and [social media card](#) and/or [screen graphic](#) to promote the walk-ins webpage at your practice. For printed copies of the poster (also available as a postcard) please email [selccg.communications@nhs.net](mailto:selccg.communications@nhs.net).

---

## Updated Patient Decision Aid - AstraZeneca (AZ) COVID-19 vaccine and the risk of blood clotting

Following further changes to national [guidance](#) on the risk of blood clotting with the AZ COVID-19 vaccine, the Patient Decision Aid (PDA) to support clinicians with the review of patients has been updated. The key-changes include the removal of Box 2, as there is now clearer guidance relating to the use of the vaccine in patients with antiphospholipid syndrome. The algorithm has also been amended to remove contraindications to thrombosis events as per the updated advice. The PDA is available on the [SELCCG GP website](#) and also provides information on managing suspected adverse effects with the vaccine.

---

## COVID-19 Vaccine Moderna and Pfizer/BioNTech COVID-19 vaccine: myocarditis and pericarditis

Revisions have been made to the product information for the Moderna and Pfizer/BioNTech COVID-19 vaccines advising healthcare professionals to be alert to the signs and symptoms of myocarditis and pericarditis, following publication of an MHRA alert on the 25th June 2021. Vaccinated individuals should be advised to seek immediate medical attention should they experience new onset of chest pain, shortness of breath or symptoms of arrhythmia, please see the hyperlinks below for further information:

- [COVID-19 Vaccine Moderna](#)
  - [Pfizer/BioNTech COVID-19 vaccine](#)
- 

## Important information on the changes to staff ordering and reporting lateral flow testing kits for asymptomatic testing

From 5 July 2021, the NHS will move to an individual 'pull' model of LFD supply. This means staff will need to replenish their tests by ordering from the Gov.UK [website](#) to be sent directly to their home address. Primary care organisations will no longer order tests for their staff via the Primary Care Support England (PCSE) portal. Staff will be able to order their own tests online and input the postcode of their workplace to ensure the tests are registered as belonging to an NHS member of staff. A box of seven tests

will be posted to staff at their home address. Staff will continue to report the results of their tests on the gov.uk website as per current practice. Organisations and regions will receive management information from NHS Test and Trace to help them understand what proportion of their staff have ordered and reported tests including contractor group and region.

Read NHS E/I [letter](#) for further information.

---

## **FAQs: COVID-19 vaccinations for patients without an NHS number**

No one should be denied access to a COVID-19 vaccination based on not having an NHS number or not being registered with a GP. This is particularly important in the case of health inclusion population groups, such as Gypsy, Roma or Traveller communities, homeless people, vulnerable migrants such as refugees and asylum seekers and sex workers, who should be vaccinated if they fall within the current eligible JCVI cohorts. More information can be found in the [FAQs for patients without an NHS number](#) and/or not registered with a GP.

---

## **Guide to support discussions about the COVID-19 vaccination**

OHSEL has developed a [useful guide](#) to support people to have discussions about the COVID-19 vaccination. The guide contains some top tips on how to prepare and plan conversations, listen, be supportive and understanding as well as links to further useful information about the vaccine.

---

## **Vaccination to be compulsory for Care Home staff in England under new law**

From October, subject to Parliamentary approval, anyone working in a CQC-registered care home in England for residents requiring nursing or personal care must have 2 doses of a COVID-19 vaccine unless they have a medical exemption. This decision follows an extensive public consultation with thousands of staff, providers, residents and families. A further consultation will be launched on whether to extend to other health and social care settings. The consultation will also explore whether flu vaccination should also be a condition of deployment for staff working in health and social care settings. More [here](#).

## **GP updates**

### **PCN extended hours services – data collection delayed until August**

The south east London primary care team would like to confirm that due to the ongoing pressures general practices and PCNs are facing in delivering the COVID-19 vaccination programme, the data collection for the extended hours service will be delayed until August. We will be writing to the PCN clinical directors and their alternative contacts regarding the information required in due course.

---

## Call for Flu stock audit

All practices in south east London are currently being asked to complete a flu stock audit for the 2021/22 flu programme. The stock audit seeks confirmation that sufficient orders have been placed to achieve a 75% uptake rate for the over 65s and under 65s at risk and that sufficient orders have been placed to achieve at least the same uptake rates as last year for the 50–64-year-old cohort.

To support practices to plan their orders, the CCG is pleased to confirm that excess vaccine orders for the 2021/22 flu season will be underwritten by the CCG - practices will however need to work with their local immunisation lead to offer excess stock as mutual aid before claiming any costs.

The CCG hopes this commitment will make it easier for practices to confirm their 2021/22 flu orders with suppliers and secure sufficient stock to achieve the required uptake rates in 2021/22.

---

## New enhanced services (Weight management and managing long Covid) from 1 July 2021 to 31 March 2022

NHS England and Improvement has announced two new enhanced services in their 'Update to GP contract arrangements for 2021-22' [letter](#) published on 17 June 2021.

GP practices in SEL will be invited to sign up to these services in the upcoming weeks with further details of the formal process to follow.

---

## New SEL training practice nurse survey

SEL training hubs have recently appointed practice nurse leads Debbie Brown and Rebecca Corneck in a joint post. A short survey has been developed to understand the training needs across SEL of nursing and AHP teams. The deadline for completion is 9 July. Please complete the survey using the following [link](#).

---

## Quality alerts report for Q4

The Quality team have shared some important key learning outcomes from quality alerts raised in Q4, between 1 January 2021 and 31 March 2021. This learning has supported patients with their safety and quality and can be evidenced in some of the individual alert responses within the report. The report gives an overview of alerts raised from all six boroughs. Read the report [here](#).

## Information from Acute Providers

### Referrals to the Ambulatory services at Guys and St Thomas'

The unit is open 7 days week and provides same day (or next day) acute medical assessments, diagnostics, and treatment for urgent medical complaints, with access to blood tests and scans (X-ray, ultrasound, and CT).

If you believe your patient would benefit from discussing their care with an acute clinician, the following Same Day Emergency Care pathways are available on Consultant Connect:

- Acute Kidney Injury
- Atrial Fibrillation
- Cellulitis
- Chest Pain (non-musculoskeletal)
- Deep Vein Thrombosis
- Falls
- Pulmonary embolism
- Pyelonephritis
- Acute Medicine (for conditions not listed above)

Referrals are by the Consultant Connect app and accepted patients present directly to the Multi-Specialty Assessment Unit (MSAU) at St. Thomas' Hospital. (Enter via the Lambeth Wing entrance and not the Emergency Department).

## Cancer updates

### Action required to ensure FIT results are pulled through onto cancer referral forms

An issue has recently been discovered with the recently updated Pan-London cancer referral (2WW) forms, which may mean FIT results will not pull through from the patient record onto the referral form.

Access the [instructions](#) on how to make the necessary changes at practice level to ensure results are pulled through. The change takes one to two minutes and once completed will take effect for the entire practice.

---

### New lung cancer awareness campaign

A new lung cancer public health awareness campaign has launched in four of the six boroughs in Southeast London – Greenwich, Lambeth, Lewisham and Southwark.

The campaign, called 'Do It For Yourself', aims to encourage early diagnosis. A full range of materials to share with stakeholders via social media, as well as on websites are available. Including a [leaflet](#), [social media copy](#), and social media [graphics](#). Materials such as beer mats and pharmacy bags are also available. Contact [zara.gross@gstt.nhs.uk](mailto:zara.gross@gstt.nhs.uk) for further information.

---

### South East London Cancer Alliance

Latest version of the update below, which also includes some FAQs for primary care on cancer services in south east London to support GPs and patients during the pandemic.

Important updates include:

- Incident relating to the cervical screening programme
- e-RS advice and guidance – 'Consent to convert' to referral not in use

[Cancer updates for GPs \(21 June 2021\)](#)

## Online seminars, webinars and e-Learning

### Understanding autism training session – Last call

The SEL Learning Disability and Autism Programme is running an Understanding autism training session for primary care staff. The training is being delivered by Laurie Morgen, an autistic author, speaker, trainer and workshop facilitator.

There are 10 spaces left on a first come first served basis. Please contact [alexandra.pearson1@nhs.net](mailto:alexandra.pearson1@nhs.net) by Wednesday 30 June at 4pm to book your slot.

**Thursday 1 July 2021 - 10:00 to 13:00**

---

### Free GP virtual events from Guy's and St Thomas

Guy's and St Thomas are running free virtual training seminars in the next few weeks. Each of these talks counts for one CPD point and a certificate of attendance will be sent to you.

#### Chronic kidney disease virtual update for GP's - evening seminar

A virtual event organised by Guy's and St Thomas' and King's College Hospital's renal departments. Dr Ellie Asgari and Dr Catriona Shaw Consultant Nephrologists will present.

**Thursday 8 Jul 2021- 19:30 to 20:30**

Book via the [link](#).

#### Management of diabetes in primary care - lunchtime seminar

Run by Dr Piya Sen Gupta, Consultant in Diabetes at Guy's and St Thomas and Dr Omar Mustafa, Consultant in Diabetes at King's College Hospital. Questions will be taken at the end of the talk.

**Friday 9 July 2021 - 13:30 to 14:30**

Book via the [link](#).

#### Seminar on Understanding COVID-19 Impact on childhood immunisations

Priyanka Trehan, Senior Immunisation Improvement Manager, is chairing a webinar to present the results of their survey on understanding if the COVID-19 pandemic has had an impact on childhood immunisations, and if so, what additional support is needed.

**Tuesday 6 July 2021 - 13:00 to 13:45**

Book via the Microsoft Teams [link](#).

#### Welcome to General Practice - webinar

A session for GP trainees and newly qualified GPs to help you understand the exciting opportunities available to you on your journey from CCT to your first revalidation.

**Tuesday 27 July 2021 – 9:00 to 11:00**

Book via the [link](#).

### **Support for mid-career GPs – webinar**

An overview of the differing support initiatives which could be available to you as a mid-career GP, helping to enhance your career in a way that suits you. This may be participating in funded mentorship training or hearing more about how we are supporting flexible working.

**Tuesday 3 August 2021 – 14:00 to 15:00**

Book via the [link](#).

## **Information resources**

### **Updated and mobile friendly Primary Care Dermatology Society website**

This is a user-friendly primary care resource that promotes confident skin care for HCP and patients. The community dermatology service signpost HCP and patients to it from clinics and most of the care and advice, aligned to SEL pathways is found there.

[The Primary Care Dermatology Society | UK \(pcds.org.uk\)](http://pcds.org.uk)

---

### **FIT admin cancer pathway poster**

[The Transforming Cancer Services Team \(TCST\)](#) have created a poster for practice staff to support in explaining to patients the correct way to complete and return Faecal Immunochemical Tests (FIT). This is in response to increasing numbers of tests getting rejected from labs due to incorrect labelling of kits, the wrong specimen container being used or incorrect/improper closure of the container.

GPs are encouraged to:

- Share this poster with administrative/reception staff in your surgery.
- Display the poster where the FIT Kits are kept or at a location that is visible/accessible when staff are speaking with patients about their kits.
- Remind staff that samples can be kept for up to 10 days (in hotter weather they can be stored in the fridge) and that they should not be thrown away if they arrive after the last collection before the weekend.

The poster, as well as translated versions of the Patient Information Leaflets (PIL) to accompany the FIT Kit can be [found here](#) on the Healthy London Partnership website. For more information, please contact: Eilian Fairbairn, Strategy Implementation Lead at TCST - [elliann.fairbairn@nhs.net](mailto:elliann.fairbairn@nhs.net)

---

## Get involved in Thank You Day and NHS birthday celebrations

On Sunday 4 July the [Together coalition](#) will lead a national day of thanks and recognition for the work of NHS staff.

NHS London have provided a range of materials to use and share on social media which can be [downloaded here](#). You can also share any of the activities you have planned for the day with [london.commsteam@nhs.net](mailto:london.commsteam@nhs.net) and locally with [selccg.communications@nhs.net](mailto:selccg.communications@nhs.net) so that we can support and amplify across all channels. Find out more on the [Thank You Day Facebook page](#).

## Recruitment

### Opportunity for a clinical leader in new pathology partnership for south east London

An exciting opportunity has arisen for a strategic clinical lead to join the team managing the transfer of laboratory services for primary care in south east London (SEL). The new pathology partnership was formed on 1 April 2021 by Guy's and St Thomas', King's College Hospital NHS Foundation Trusts and SYNLAB to deliver and transform pathology services for hospitals, GPs, community services and other NHS healthcare providers.

To apply and learn more about the role, including key responsibilities and the essential skills required, read the full job advertisement [here](#).

Copyright © 2021 NHS South East London CCG. All rights reserved.

This email was sent by [selccg.communications@nhs.net](mailto:selccg.communications@nhs.net)

If you wish to unsubscribe, please email: [selccg.communications@nhs.net](mailto:selccg.communications@nhs.net)