

ONE BROMLEY

WORKING TOGETHER TO IMPROVE HEALTH AND CARE IN BROMLEY

Covid vaccination programme

Cheryl Rehal

Bromley Primary Care Team

NHS South East London CCG

13 May 2021

Programme governance

South East London Vaccination Programme

SEL System Vaccination Operations Centre (SVOC):

Oversight across boroughs; coordinates workstream leads; reports to Regional Vaccination Operations Centre (RVOC)

Bromley Covid Vaccination Taskforce: working group for Bromley site leads

Clinical leads
and quality
assurance
support

PRUH - MVC
Lead

PCN sites &
Care Homes

Pharmacy
sites

Meds
Management

Support: IT,
Comms,
Estates

Primary Care

BHC assisting housebound vaccs

LBB/CCG Vaccine Uptake Inequalities Group

SMI patients – *with Oxleas*

LD patients

Homeless patients

Outreach clinics – *with BGPA*


Health & care staff

BTSE support



Vaccines available

Pfizer/BioNTech
BNT162b2



Dose
0.3ml

Age from
16 years of age

Minimum interval between 2 doses
21 days

Pack size
195 multidose vials*

Minimum number of doses per vial
6

Requires dilution?
Yes with 1.8ml preservative free sodium chloride 0.9%

Frozen storage
-80°C to -60°C

Routine storage
Thawed and undiluted. 5 days (120 hours) at +2°C to +8°C


Use after 1st dose withdrawn
Once diluted, use within 6 hours
Store at +2°C to +25°C

Appearance
Diluted solution off white with no particulates visible

Observation
15 minutes observation

* Pack volumes may vary, check with your supplier

AstraZeneca**



Dose
0.5ml

Age from
18 years of age

Minimum interval between 2 doses
28 days

Pack size
10 multidose vials

Minimum number of doses per vial
10 (5ml vial) / 8 (4ml vial)

Requires dilution?
No

Frozen storage
Not applicable

Routine storage
+2°C to +8°C. 6 months or until expiry


Use after 1st dose withdrawn
Use within 6 hours of first puncture
Store at +2°C to +25°C

Appearance
Colourless to slightly brown clear to slightly opaque no particles

Observation
No observation period required but not to drive for 15 minutes

** The same AZ vaccine is currently being provided in either a green or red capped vial (according to production). Either syringe supplied can be used to administer the vaccine

Moderna



Dose
0.5ml

Age from
18 years of age

Minimum interval between 2 doses
28 days

Pack size
10 multidose vials

Minimum number of doses per vial
10

Requires dilution?
No

Frozen storage
-25°C to -15°C

Routine storage
Thawed. +2°C to +8°C for up to 30 days

Use after 1st dose withdrawn
Use within 6 hours of first puncture
Store at +2°C to +25°C

Appearance
White to off-white dispersion, may contain white or translucent particulates

Observation
15 minutes observation

Resources:

Green Book Chapter 14a: www.gov.uk/government/publications/covid-19-the-green-book-chapter-14a • GOV.UK COVID-19 vaccination programme: www.gov.uk/government/collections/covid-19-vaccination-programme

Movement restricted to designated sites and residential care settings

Clinical advice and patient decision aid issued to reflect AstraZeneca developments

Available at GSTT as one of a limited number of sites across the country

Bromley vaccination sites

Local Vaccination Services (PCN Sites)

- A** Oaks Park
- B** Beckenham Beacon
- C** London Lane
- D** St Edward's Church, Mottingham
- E** West Wickham & Shirley Baptist Church
- F** Orpington Health & Wellbeing Centre

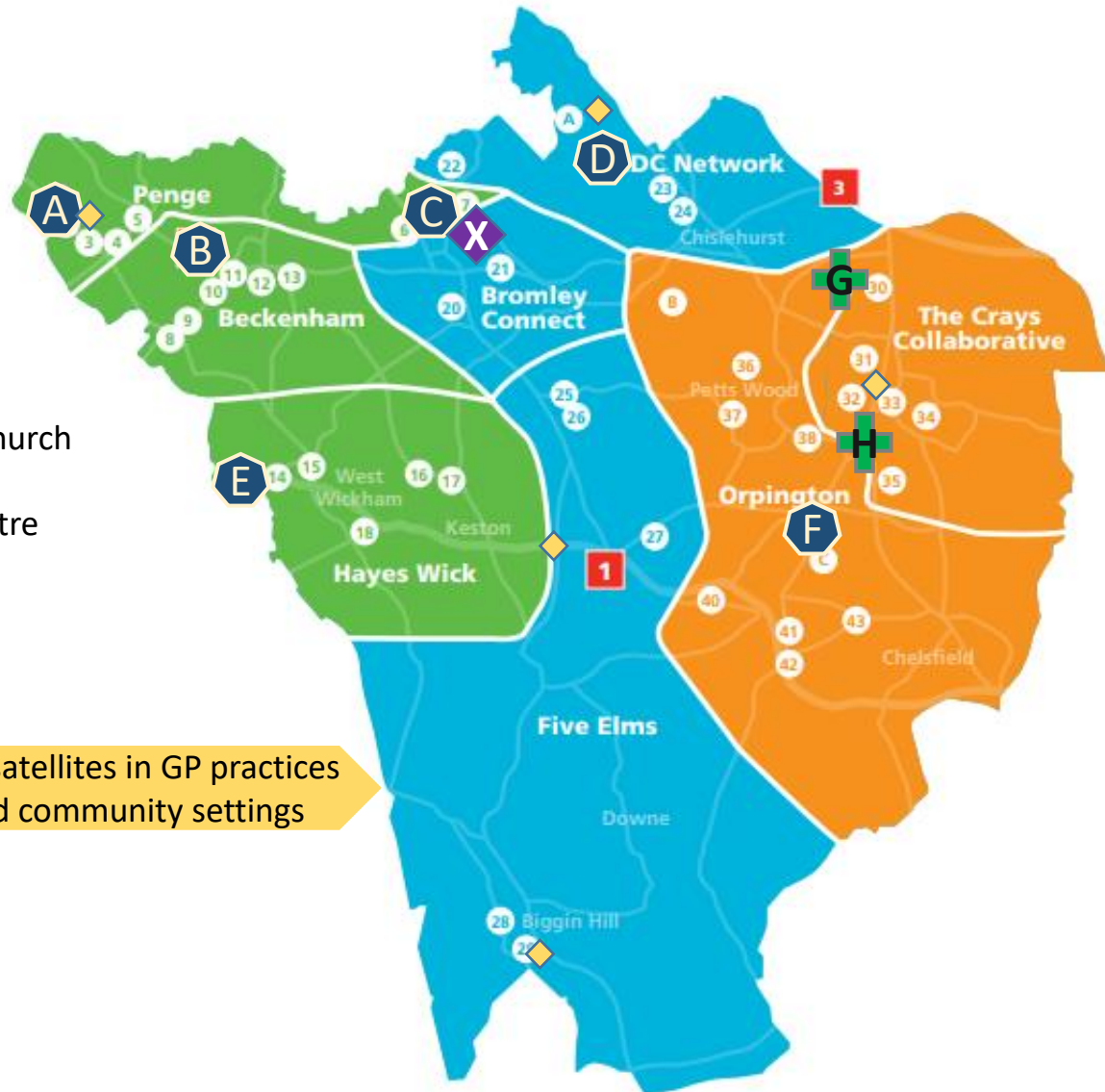
X **Mass Vaccination Site**
Bromley Civic Centre

1 **Hospital Hub (until 7 May)**
PRUH

Pharmacies

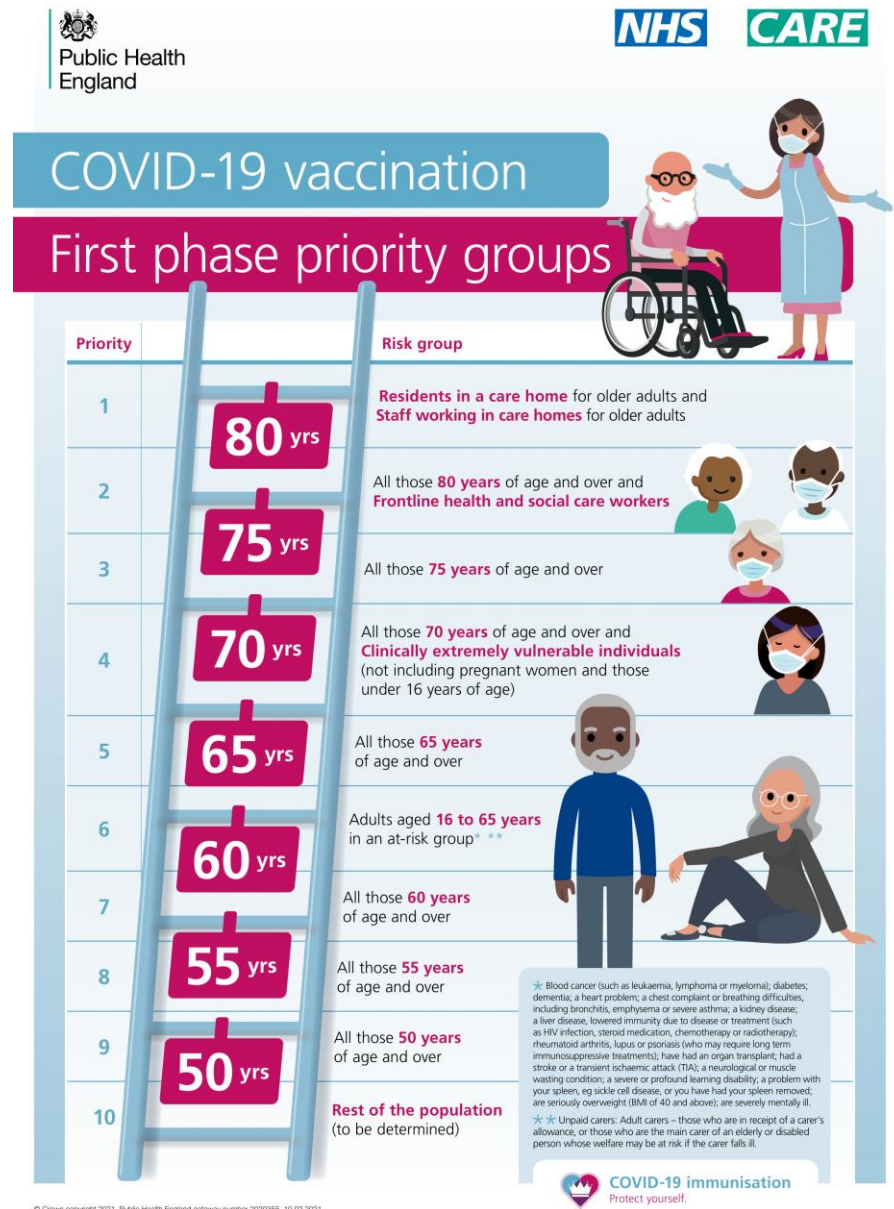
- G** Cray Hill
- H** Eldred Drive

Plus satellites in GP practices
and community settings



Eligible cohorts

- First phase priority groups continue to be contacted and targeted as part of an 'evergreen' offer
- Second phase commenced: eligibility most recently extended to 40-49 year olds
- National target is to offer a first dose to every adult by end July.



© Crown copyright 2021. Public Health England gateway number 2020055. 10.02.2021

Workforce

- 500 volunteers through Community Links Bromley, plus other volunteers through PPGs and local networks
- Core general practice teams are playing a central role at sites: GPs, nurses, HCAs, pharmacists and non-clinical staff
- Bromley GP Alliance staff bank continues to grow with trained staff
- Military teams (for a limited period only) – accessed via the regional team
- National volunteer workforce is being developed: via St John's Ambulance and Good Samaritan app

As demand for general practice ramps up to pre-pandemic levels (or higher), and as lockdown eases, suitably skilled and qualified workforce for the vaccination programme may become increasingly challenging to secure.



Uptake

Bromley

Cohort	Population	Dose 1	% Dose 1	Remaining
80+	17,834	16,875	94.62%	959
75-79	11,756	11,085	94.29%	671
70-74	16,306	15,174	93.06%	1,132
CEV	19,245	17,365	90.23%	1,880
HSCW	7,065	5,982	84.67%	1,083
65-69	15,528	14,088	90.73%	1,440
At Risk under 65	28,240	22,926	81.18%	5,314
Carers - DWP	3,352	2,432	72.55%	920
Carers - LA	764	665	87.04%	99
60-64	19,519	17,340	88.84%	2,179
55-59	24,213	20,745	85.68%	3,468
50-54	25,697	21,385	83.22%	4,312
40-49	52,336	23,698	45.28%	28,638

Bromley has a high overall rate of vaccine uptake amongst the eligible population.

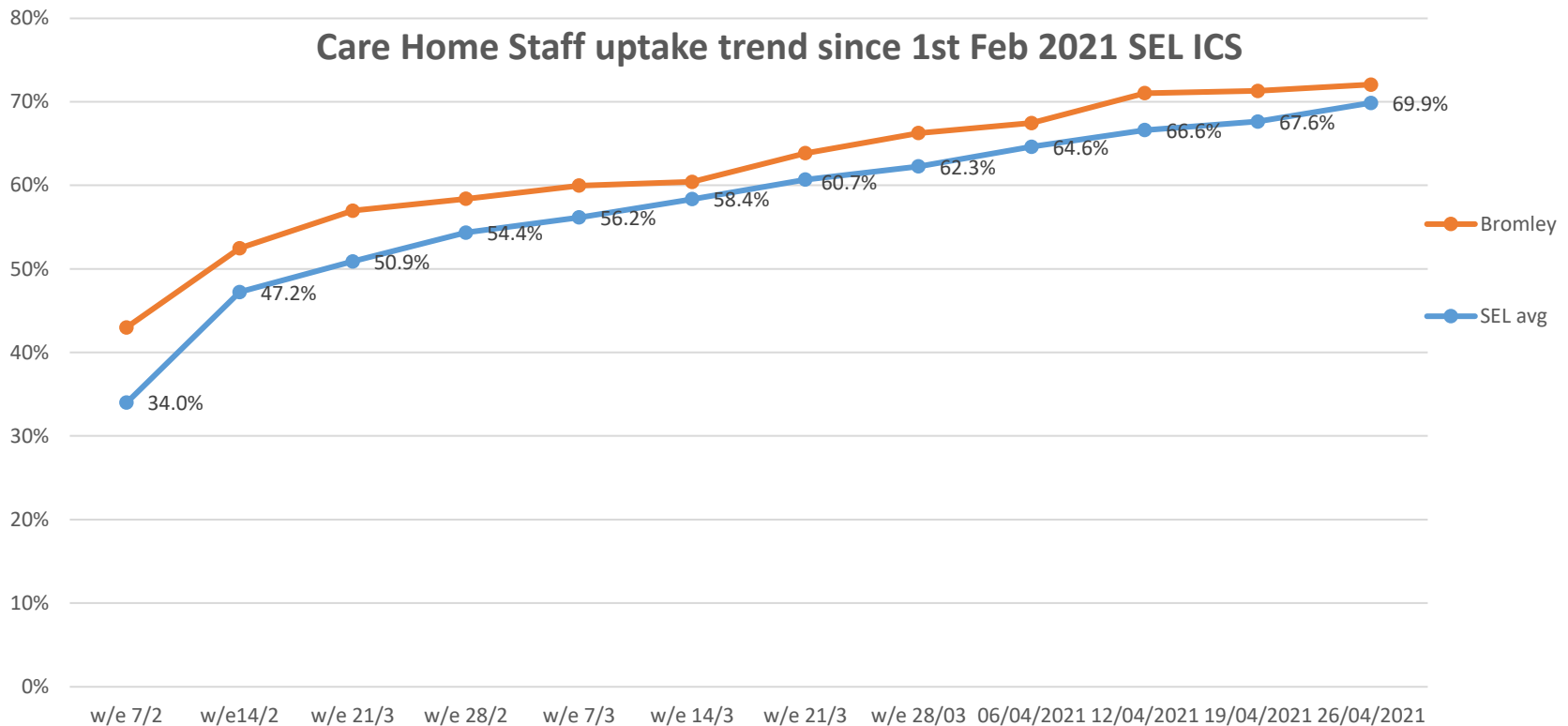
GP surgeries have followed up with every eligible patient who has not yet come forward, or declined, to re-offer the vaccination and discuss concerns.

Local sites have also vaccinated eligible health and care staff working or living in Bromley.

Data source: NIMS, 26 April 2021



Uptake amongst health/care staff



Care Homes homes - dose 1				
	Residents	%	Staff	%
Bromley	1160	95.4%	1403	72.1%

Care home residents and staff are able and encouraged to access the Covid vaccination on an ongoing basis.



Data source: Capacity Tracker, 26 April 2021

Variation in uptake

	Ethnicity Group	Population	Uptake %	Remaining
BROMLEY BOROUGH	African	2,531	67.6%	820
	Asian	5,881	86.3%	807
	Caribbean	2,044	64.1%	734
	Mixed	2,175	74.5%	554
	White	103,495	92.6%	7,686
	Other	14,796	74.3%	3,798
BROMLEY BOROUGH TOTAL		130,922	89.0%	14,399

In line with the rest of London, the uptake amongst BAME groups is lower than in the white population and there is also lower uptake in areas of higher deprivation, such as Penge, The Crays, Mottingham and Bromley Common.

Care home staff have lower vaccine uptake than the general population.

There is a vaccine inequalities plan which seeks to address this variation.

Data source: NIMS, 20 April 2021

NB: Population and uptake include cohorts 80+, 75-79, 70-74, 65-69, 60-64, 55-59 and 50-54



Public communications

- Public webinar, together with a range of briefings to patient and other stakeholder groups
- Videos available on social media channels showcasing Bromley vaccination clinics, featuring local staff and residents
- Advertorials in the Bromley News Shopper and other local print and online news media
- Social media presence
- VIP visits
- One Bromley patient network group and community forums
- Through One Bromley partners



Inequalities in vaccine uptake

Plan to address inequalities overseen by joint LBB-CCG senior group

Developing interventions targeted at individual and small group level to achieve the best impact

Insights: public survey via LBB, engagement with local faith leaders

Social care staff: email helpline and callbacks by clinicians; webinars for staff and managers; videos featuring local care homes

Targeting lower uptake communities: pop-up clinics and roving team in local venues, accompanied by high levels of promotion, supported by community partners

Patients with SMI: targeted contact; offer of clinics via Oxleas; patient advocacy

Homeless: pop-up clinics at homeless shelter and outreach to hostels

SEL-wide promotion: 'Vaccine Facts' will feature local people across billboard, digital and media publicity, plus information microsite

