

# Algorithm for GPs on Urgent Suspected Cancer Referrals and Safety Netting during the COVID-19 Pandemic

## Symptoms meeting updated 2WW criteria

## Symptoms NOT meeting updated 2WW criteria

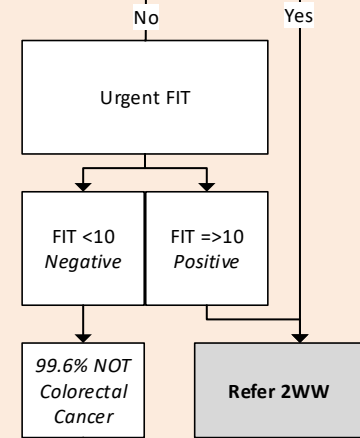
### Other Tumour Group

Refer 2WW

### Lower GI

**Unexplained:**

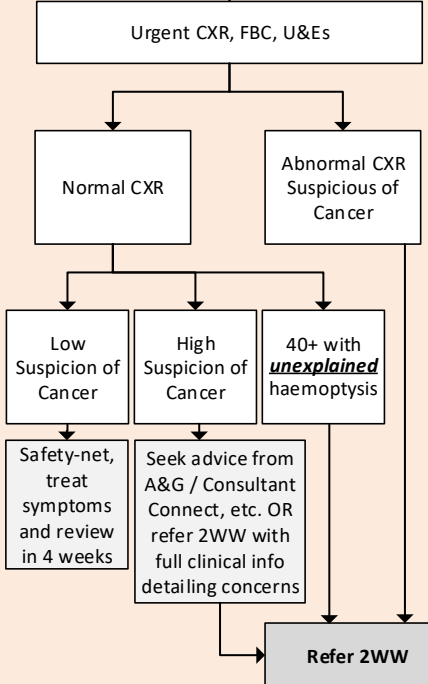
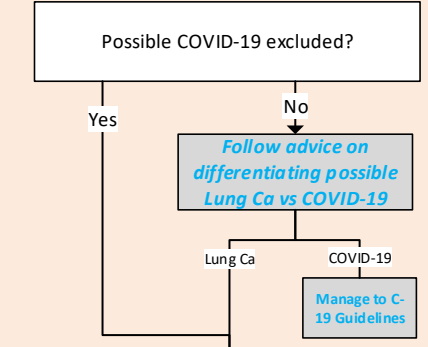
- Rectal/anal mass;
- Anal ulceration.



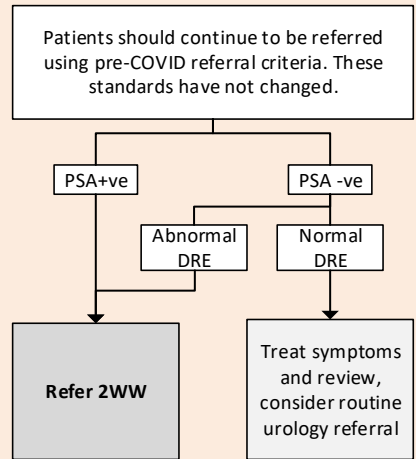
**Consider:**

- Safety netting and review at 4-6 weeks to consider need for referral;
- Consider an alternative 2WW pathway that may be more appropriate for the patients symptoms e.g. upper GI, urological, gynaecological or to Rapid Diagnostic Centre (RDC);
- Seeking advice from a specialist via Advice & Guidance or a similar service;
- Refer on LGI 2WW pathway but with **FULL** clinical information included.

### Lung



### Prostate

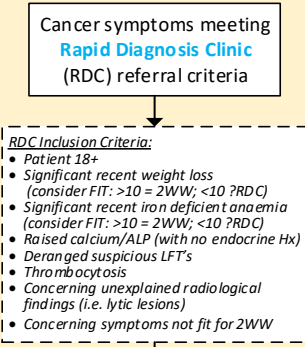


It is recommended that PSA test counselling with men presenting with symptoms suggestive of prostate cancer take place on the phone/video and include the balance of risks of attending the surgery for a test during the pandemic.

Patient Information Leaflets

Pan-London Urology Suspected Cancer Referral Guide

### Higher Risk of Cancer

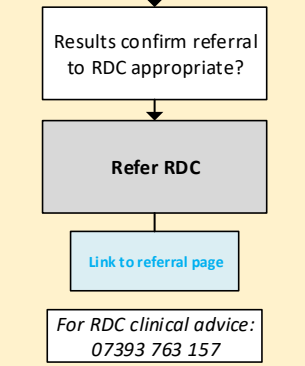


Tests to be completed prior to referral:

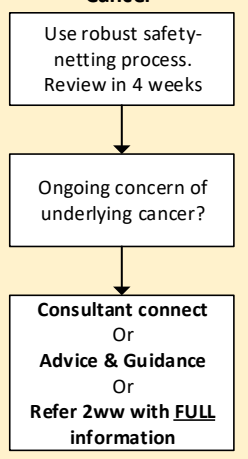
- urinalysis
- urgent blood tests - full blood count, electrolytes, renal function, liver function tests, bone profile, HbA1c, thyroid function test, CRP
- urgent chest x-ray - include full clinical details and mark the request 'very urgent' to ensure it is reported without delay.

Patients with abdominal symptoms and/or weight loss may also require:

- Coeliac antibodies, serum amylase, gamma GT
- CA125 and urgent pelvic US in women >45yoa
- Urgent PSA



### Low Risk/Less Concern of Cancer



### FURTHER RESOURCES:

- LINK: SEL COVID-19 Relevant Guidance & Resources, including changes to pathway during response: <https://selondonccg.nhs.uk/covid-19-clinical-support/>
- LINK: Primary Care National Guidance and Resources relating to COVID-19 on NHS England Website: <https://www.england.nhs.uk/coronavirus/primary-care/>
- LINK: Pan-London Cancer Referral Resources: <https://www.healthylondon.org/resource/covid-19-cancer-referral-resources/>

**Governance:**  
Author(s): David I'Anson, SEL Cancer Alliance  
Reviewer(s): All SEL Cancer Alliance GP Leads  
Approver: Dr Anthony Cunliffe, Joint Clinical Chair, South East London Cancer alliance