

What is a Lateral Flow Test (LFT)?

A simple-to-use point of care solution for rapid COVID-19 testing

LFT is a **new kind of technology** that could enable us to **identify and isolate more asymptomatic people** who are at high likelihood of spreading virus, whilst simultaneously **minimising disruption** for those who test negative.



Key Facts	
What it does	Qualitative detection of nucleocapsid antigens from the SARS-CoV2 virus
Sample type	Swab (Throat & Nose)
Diagnostics	Lateral flow colloidal gold immunochromatographic assay
CE Registered	CE – IVD
Test Duration	20 – 30 minutes
Storage	Store extraction solution at 2-30°C Store the test cartridge at 2-30°C Test Cartridge should be used right after opening the pouch. Reagents and devices must be at room temperature (15–30 °C) when used for testing.
Shelf Life	24 months from manufacture date
Who Processes Sample	Specific training or guidance is recommended if operators are not experienced with specimen collection and handling procedures. Wear protective clothing such as laboratory coats, disposable gloves, and eye protection.
Sample Processing	On site of collection using the Lateral Flow test cartridge, results are collected without laboratory technology

- Link to NHS training video - <https://learninghub.nhs.uk/self-swab>

Size of delivery boxes

Packaging specifications: TK1524 & TK1573

Option 1: TK1573 – 675 tests per carton

Colour Box		Carton			Pallet		
Tests/ Box	Dimensions (mm)	Colour Boxes/ Carton	Dimensions (mm)	Tests/ Carton	Cartons/ Pallet	Dimensions (mm)	Tests/ Pallet
25	115*175*140	27	555*445*370	675	20	1200*1000* 2000	13,500

Option 2: TK1524 – 1,000 tests per carton

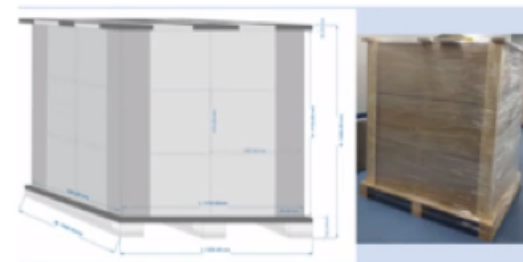
Color Box		Carton			Pallet		
Tests/ Box	Dimensions (mm)	Colour Boxes/ Carton	Dimensions (mm)	Tests/ Carton	Cartons/ Pallet	Dimensions (mm)	Tests/ Pallet
25	115*175*140	40	711*358*485	1,000	9	1200*1000* 1650	9,000



COLOR BOX



CARTON



PALLET
(UK Pallet type)