

Algorithm for GPs on Urgent Suspected Cancer Referrals and Safety Netting during the COVID-19 Pandemic

Symptoms meeting updated 2WW criteria

Symptoms NOT meeting updated 2WW criteria

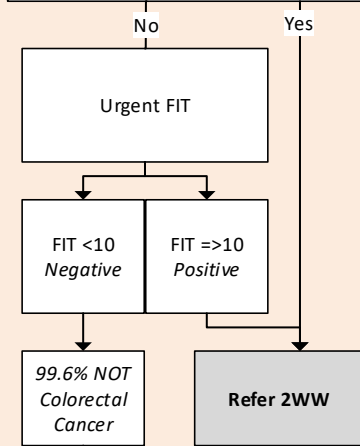
Other Tumour Group

Refer 2WW

Lower GI

Unexplained:

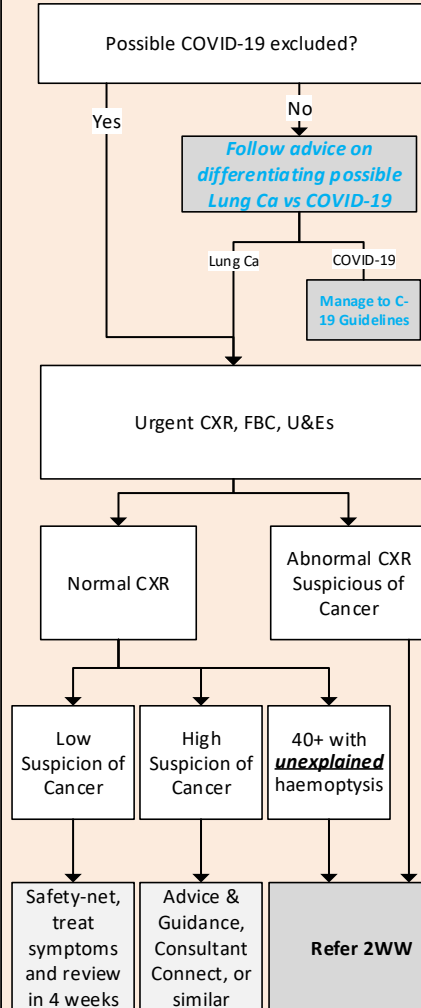
- Rectal/anal mass;
- Anal ulceration.



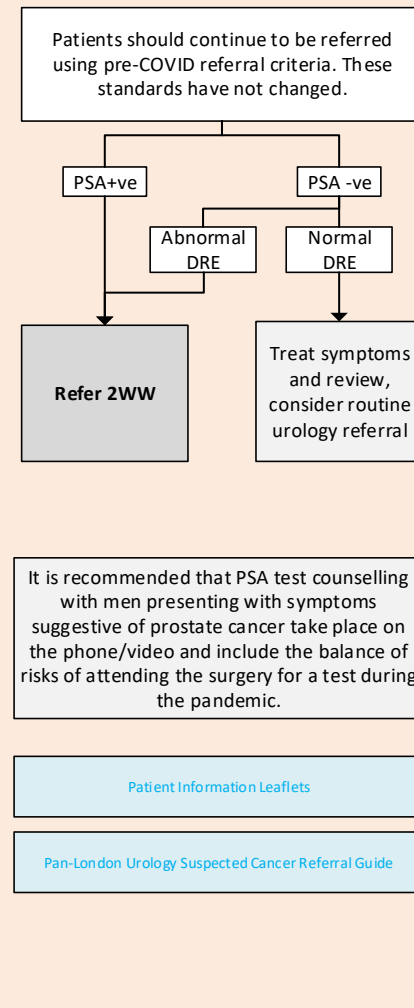
Consider:

- 1) Safety netting and review at 4-6 weeks to consider need for referral;
- 2) Consider an alternative 2WW pathway that may be more appropriate for the patients symptoms e.g. upper GI, urological, gynaecological or to Rapid Diagnostic Centre (RDC);
- 3) Seeking advice from a specialist via Advice & Guidance or a similar service;
- 4) Refer on LGI 2WW pathway but with FULL clinical information included.

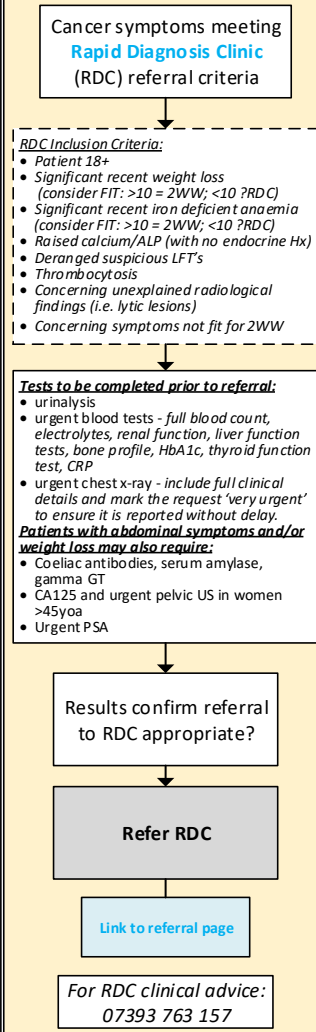
Lung



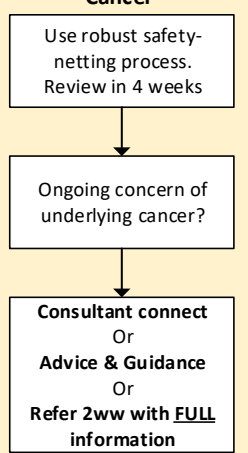
Prostate



Higher Risk of Cancer



Low Risk/Less Concern of Cancer



FURTHER RESOURCES:

- LINK: SEL COVID-19 Relevant Guidance & Resources, including changes to pathway during response: <https://selondonccg.nhs.uk/covid-19-clinical-support/>
- LINK: Primary Care National Guidance and Resources relating to COVID-19 on NHS England Website: <https://www.england.nhs.uk/coronavirus/primary-care/>
- LINK: Pan-London Cancer Referral Resources: <https://www.healthylondon.org/resource/covid-19-cancer-referral-resources/>

Governance:
Author(s): David I'Anson, SEL Cancer Alliance
Reviewer(s): All SEL Cancer Alliance GP Leads
Approver: Dr Anthony Cunliffe, Joint Clinical Chair, South East London Cancer alliance